

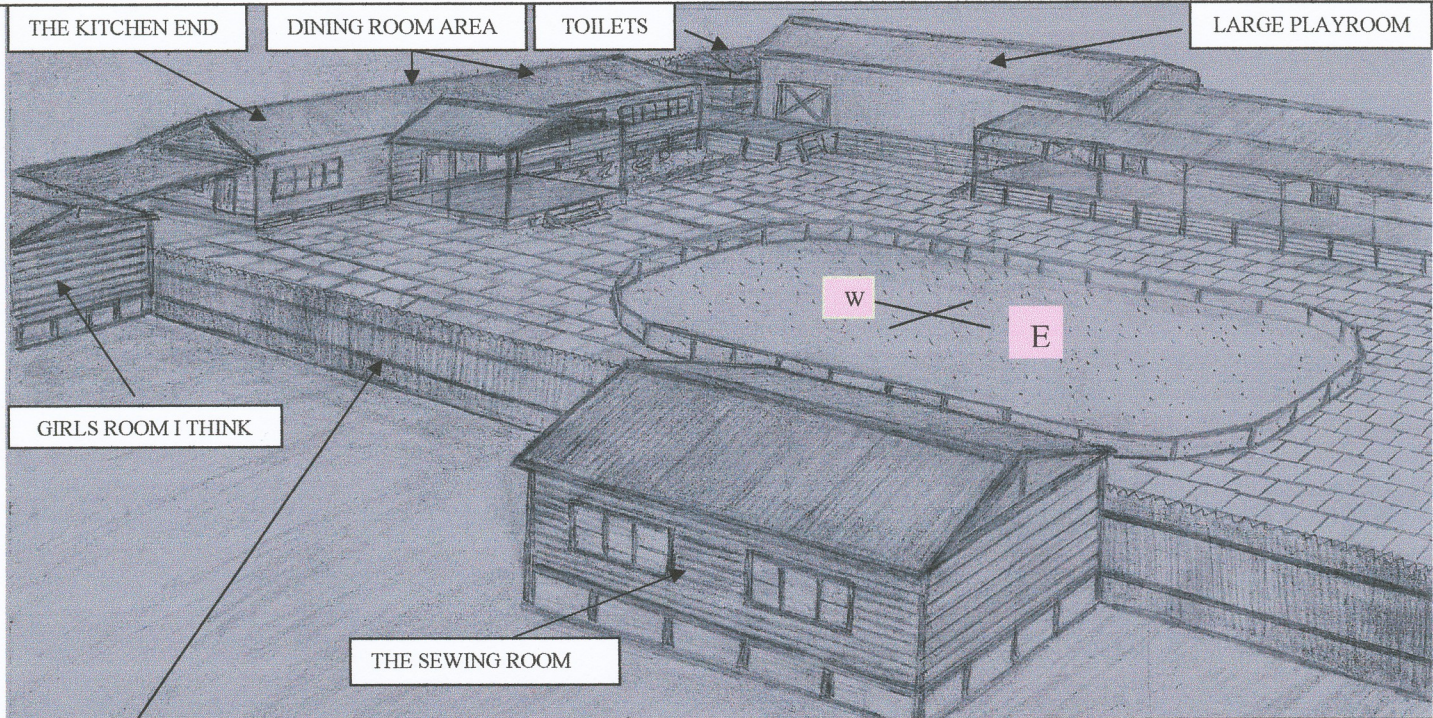
A ROUGH PENCIL DRAWING OF INSIDE THE QUADRANGLE AREA.

TOP -LOOKING WEST TOWARDS THE DINING/KITCHEN END OF THE QUADRANGLE

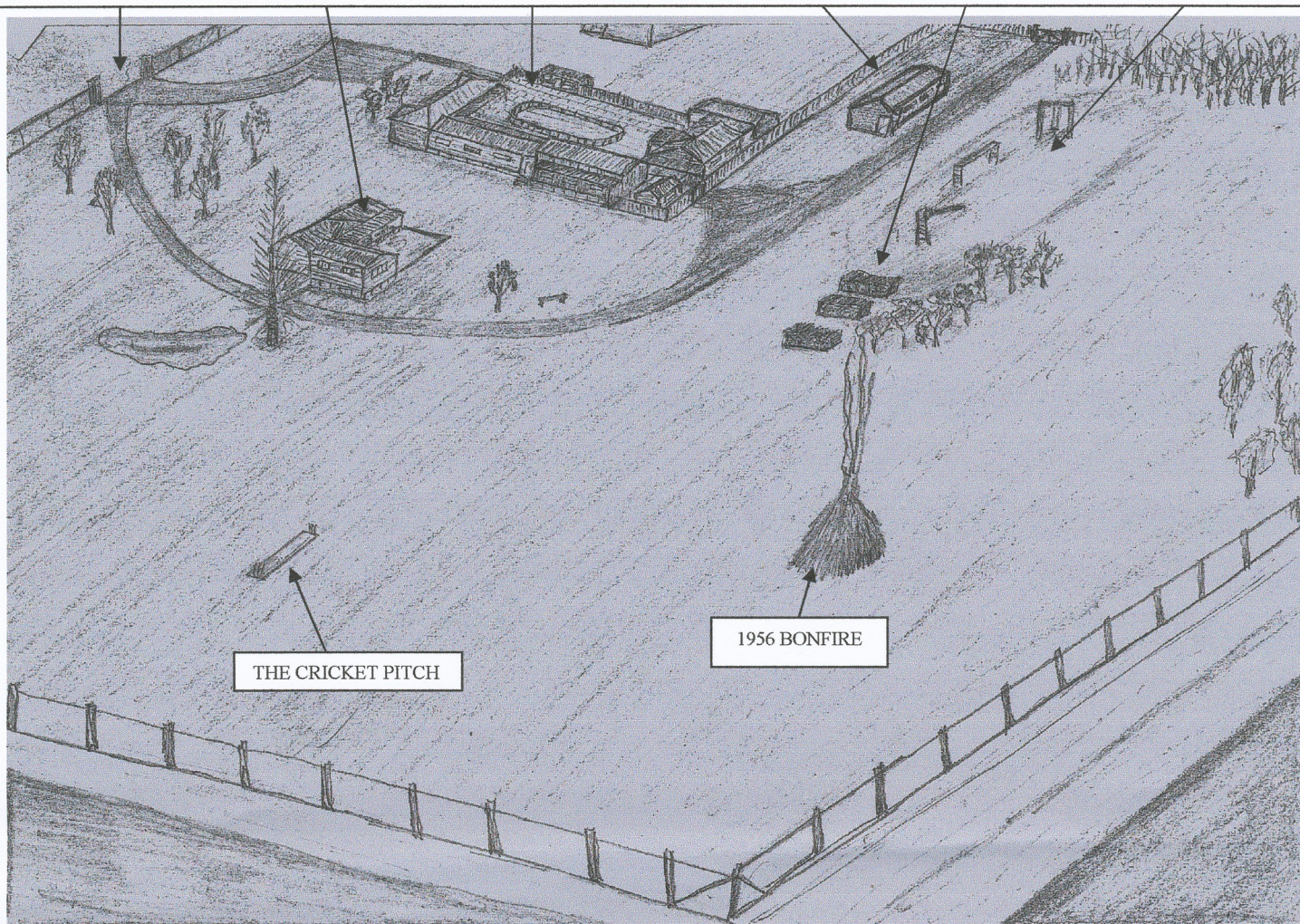
BOTTOM -LOOKING EAST TOWARDS THE DORMITORIES END OF THE QUADRANGLE.

ALL DRAWINGS ARE A BASIC OVERALL LOOK, WINDOWS VERANDAHS, FINER DETAILS ETC MAY NOT QUITE BE CORRECT.

DRAWN IN 2009- NOT TO SCALE.



THE MAIN GATE.....THE HOME SCHOOLTHE MAIN COMPLEXTHE SHOWER ROOM..... WOOD HEAP.... THE SANDY PLAY AREA

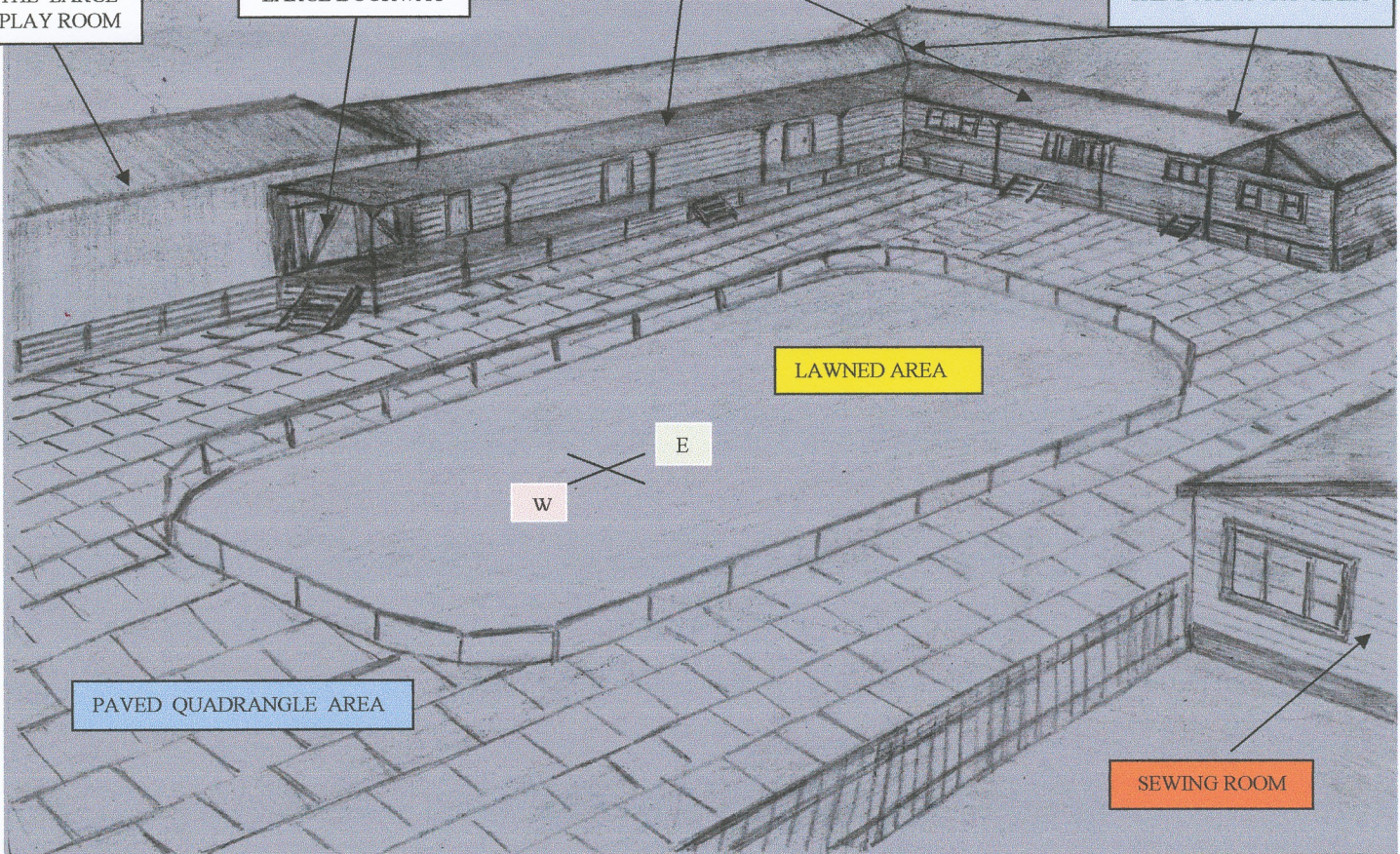


A BASIC OVERALL LOOK AT THE BOYS HOME

THE LARGE
PLAY ROOM

LARGE DOORWAY

THE DORMITORY AREA



LAWNED AREA

W

E

PAVED QUADRANGLE AREA

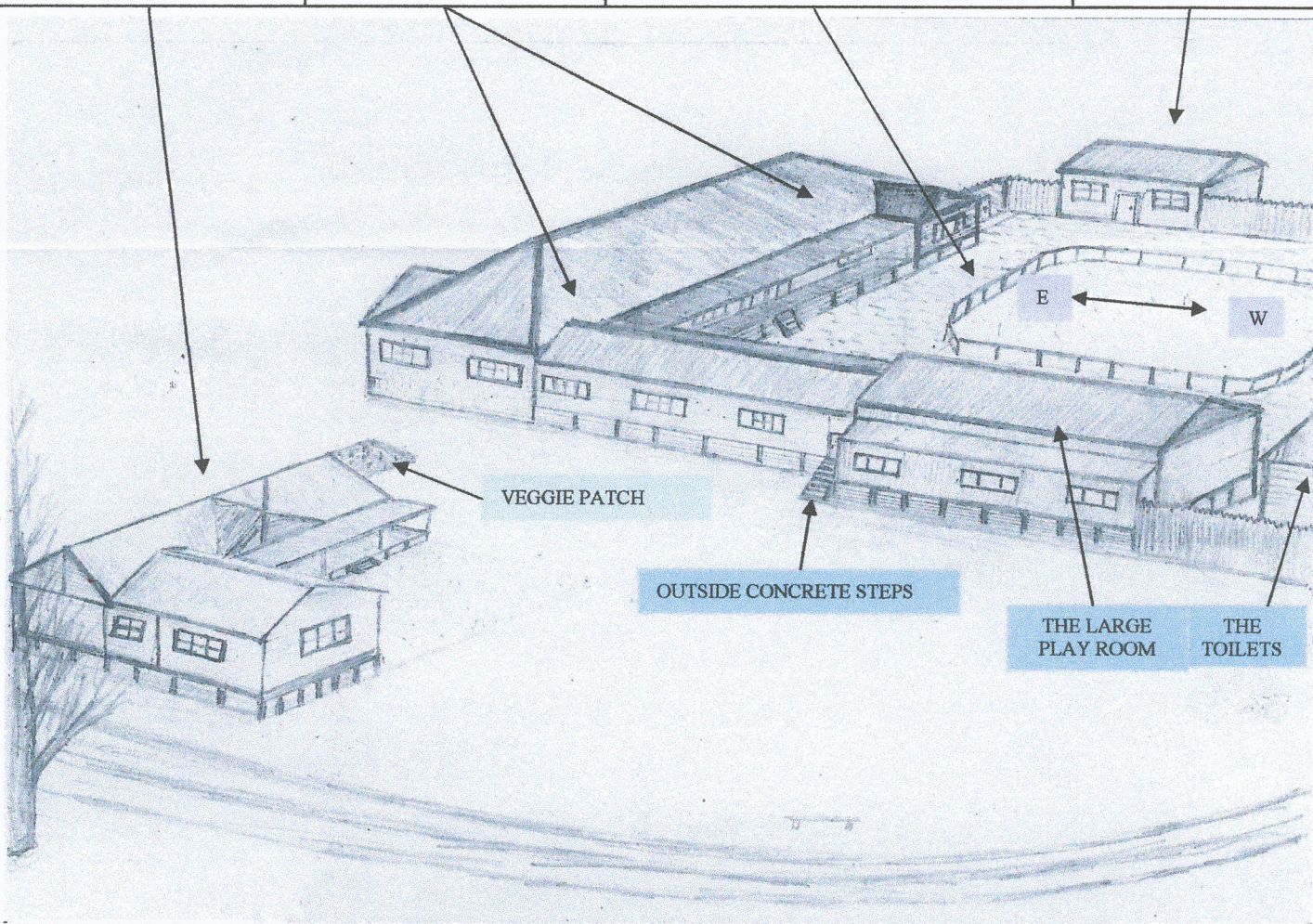
SEWING ROOM

THE HOME SCHOOL

THE DORMITORIES AREA

THE LAWN AND QUADRANGLE AREA

THE SEWING ROOM



VEGGIE PATCH

OUTSIDE CONCRETE STEPS

THE LARGE
PLAY ROOM

THE
TOILETS

THE BASIC HOME PLAN

NOT TO SCALE

MONASH AV RD

